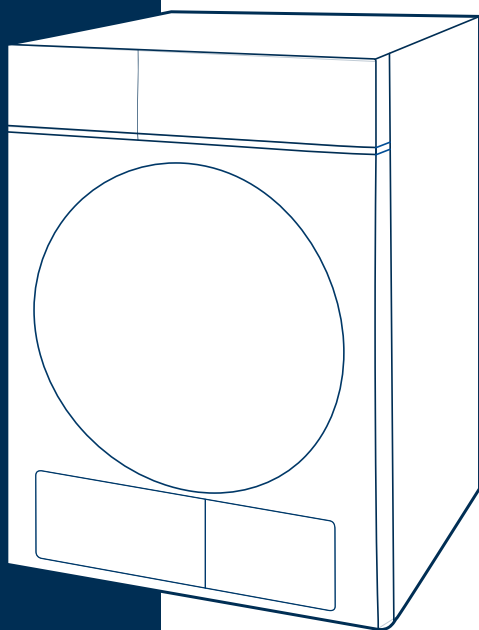


USER MANUAL

TUMBLE DRYER

Dryer



Read This Manual

Read all instructions and explanations for the installation before use. Follow the instructions carefully. Keep the operation instructions handy for later use. If the appliance is sold or passed on, ensure that the new owner always receives this operation instructions.

MODEL:
MD110H80/W-CY

CONTENTS

SAFETY INSTRUCTIONS

■ Safety Instructions	2
-----------------------------	---

INSTALLATION

■ Product Description	9
■ Installation	9

OPERATION

■ Quick Start	12
■ Before Each Drying	13
■ Control Panel	15
■ Option.....	16
■ Display.....	18
■ Programmes.....	19
■ Drying Programmes Table	20
■ Consumption Data.....	21

MAINTENANCE

■ Cleaning and Care	22
■ Trouble Shooting	25
■ Technical Specifications	27
■ Product Information Sheet.....	28



DANGER

This symbol indicates that there are dangers to the life and health of persons due to extremely flammable gas.

SAFETY INSTRUCTIONS

■ Safety Instructions



CAUTION: RISK OF FIRE !



Warning!

To prevent any damages to your and others' life or property, you have to follow the safety notes.

Intended use

- This heat pump dryer is intended for drying typical amounts of household laundry, which have been washed with water. It has been designed solely for private use and is not suitable for commercial or shared use (i.e. by several families in an apartment building).
- Use this appliance only as described in this user manual.
- This appliance is for indoor use only.
- Any other use is deemed improper and may result in damage to property or even personal injury.
- The manufacturer accepts no liability for damage caused by improper use.

Safety Instructions

- The appliance corresponds to protection class I and may only be connected to a plug with a protective conductor that has been installed properly. When connecting the appliance to the mains, make sure that the mains voltage is correct. You can find more information about this on the rating plate.

SAFETY INSTRUCTIONS

- The electrical safety of this tumble dryer can only be guaranteed when correctly earthed. It is essential that this standard safety requirement is met. If in any doubt, please have the household wiring system tested by a qualified electrician. The manufacturer cannot be held liable for the consequences of an inadequate earthing system (e.g. electric shock).

 Warning!

Electric shock hazard

- Before connecting the tumble dryer, ensure that the connection parameter on the rating plate (fuse rating, voltage and frequency) match the mains electricity supply. If in any doubt, consult a qualified electrician.
- The electrical safety of this tumble dryer can only be guaranteed when correctly earthed. It is essential that this standard safety requirement is met. If in any doubt, please have the household wiring system tested by a qualified electrician. The manufacturer cannot be held liable for the consequences of an inadequate earthing system (e.g. electric shock).
- Do not pull the power cord forcefully. Please grasp the mains plug instead
- Do not plug/draw the mains plug with wet hands.
- Do not bend, clamp or damage the power cord and the power plug.
- If the power cable is damaged, it must be replaced by the manufacturer, its service agent or similarly qualified persons in order to avoid a hazard.

SAFETY INSTRUCTIONS

- Warning: The appliance must not be supplied through an external switching device, such as a timer, or connected to a circuit that is regularly switched on and off by a utility.
- Do not connect the appliance to the mains electricity supply by an extension lead, multi-socket adapter or similar.
- The accessibility of the plug must always be ensured, in order to disconnect the tumble dryer from the mains.
- If the appliance appear high temperature abnormally, please draw the mail plug immediately.

Injury danger

- The appliance must not be installed behind a lockable door, a sliding door or a door with a hinge on the opposite side to that of the tumble dryer, in such a way that a full opening of the tumble dryer door is restricted.
- Do not disassemble or install the dryer without any instruction or supervision.
- Do not stack this dryer on washing machine without stacking kits. (If you want to stack this dryer on a washing machine, please purchase the independent parts. Installation shall be done by the manufacturer, its service agent or similarly qualified persons to avoid any hazards.)
- Do not lean on the opened door of the dryer.
- Condensed water is not drinking water. It can cause health problems in both people and animals if consumed.

Damage danger

- Do not put more load than rated in this user manual. See the related chapter in the user manual.

SAFETY INSTRUCTIONS

- Do not operate the dryer without the door filter.
- Do not dry the clothes before being spun.
- Do not expose the dryer directly under the sun.
- Do not install the dryer in humid and drenching environment.
- While cleaning and maintenance, please do remember to pull out the power plug and do not directly spray the dryer with water.
- The appliance should not be overturned during normal use or maintenance.



CAUTION: RISK OF FIRE !

Explosion & Fire danger

- Please do not dry the clothes with any flammable substances such as kerosene or alcohol. Otherwise, there may be explosion.
- The appliance contains an environmentally friendly but flammable R290 refrigerant. Keep away from open flame and other sources of ignition.
- The tumble dryer is not to be used if industrial chemicals have been used for cleaning.
- Do not dry unwashed items in the tumble dryer.
- Items that have been soiled with substances such as cooking oil, acetone, alcohol, petrol, kerosene, spot removers, turpentine, waxes and wax removers should be washed in hot water with an extra amount of detergent before being dried in the tumble dryer.

SAFETY INSTRUCTIONS

- Items such as foam rubber (latex foam), shower caps, waterproof textiles, rubber backed articles and clothes or pillows fitted with foam rubber pads should not be dried in the tumble dryer.
- Fabric softeners, or similar products, should be used as specified by the fabric softener instructions.
- Oil-affected items can ignite spontaneously, especially when exposed to heat sources such as in a tumble dryer. The items become warm, causing an oxidation reaction in the oil. Oxidation creates heat. If the heat cannot escape, the items can become hot enough to catch fire. Piling, stacking or storing oil-affected items can prevent heat from escaping and so create a fire hazard.
- Remove all objects from pockets such as lighters and matches.
- If it is unavoidable that fabrics that contain vegetable or cooking oil or have been contaminated by hair care products be placed in a tumble dryer they should first be washed in hot water with extra detergent. This will reduce, but not eliminate, the hazard.
- **WARNING:** Never stop a tumble dryer before the end of the drying cycle unless all items are quickly removed and spread out so that the heat is dissipated.
- Openings must not be obstructed.
- The lint trap has to be cleaned frequently.
- Lint must not to be allowed to accumulate around the tumble dryer.
- **WARNING:** In the appliance enclosure or in the built-in structure, keep ventilation openings clear of obstruction.
- **WARNING:** Do not damage the refrigerant circuit.

SAFETY INSTRUCTIONS

Safety with children

- This appliance can be used by children aged from 8 years and above and persons with reduced physical, sensory or mental capabilities or lack of experience and knowledge if they have been given supervision or instruction concerning use of the appliance in a safe way and understand the hazards involved. Children shall not play with the appliance. Cleaning and user maintenance shall not be done by children without supervision.
- Children should be supervised to ensure that they do not play with the appliance.
- Children of less than 3 years should be kept away unless continuously supervised.
- Always close the door after use. In this way you will avoid the danger of:
 1. Children climbing onto or into the dryer or hiding things in it.
 2. Pets or other small animals climbing into it.

SAFETY INSTRUCTIONS

Correct Disposal of this product:



This marking indicates that this product should not be disposed with other household wastes throughout the EU. To prevent possible harm to the environment or human health from uncontrolled waste disposal, recycle it responsibly to promote the sustainable reuse of material resources. To return your used device, please use the return and collection systems or contact the retailer where the product was purchased. They can take this product for environmental safe recycling.

Dispose of the appliance in accordance with local requirements for the disposal of Waste Electrical and Electronic Equipment.

The appliance contains flammable gas (R290). Contact your municipal authority for information on how to discard the appliance correctly.

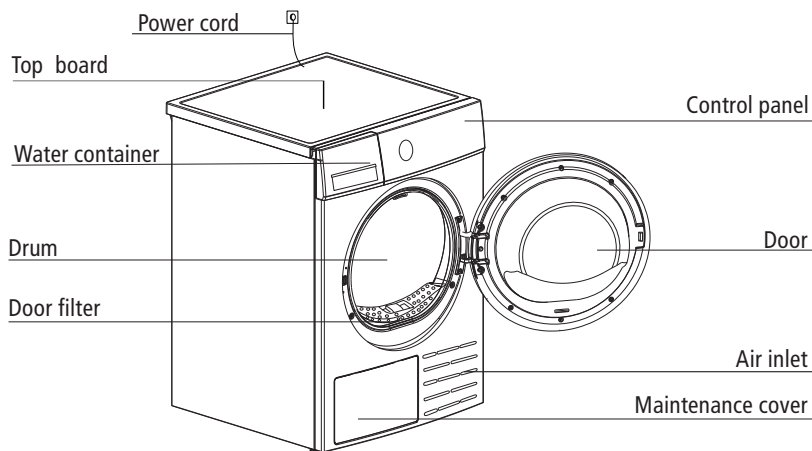
Disposal of packaging material

- The packaging is designed to protect the appliance from damage during transportation. The packaging materials are environmentally friendly and should be recycled. Recycling the packaging can reduce the use of raw materials in the manufacturing process and the amount of waste in landfill sites.

Model	Rated capacity
MD110H80/W-CY	8.0kg

INSTALLATION

■ Product Description

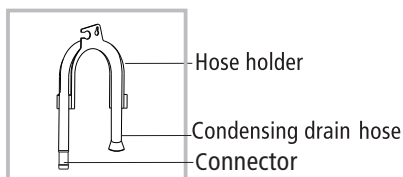


Note: The actual model you purchased might differ. Please see the product you purchased in kind prevail.

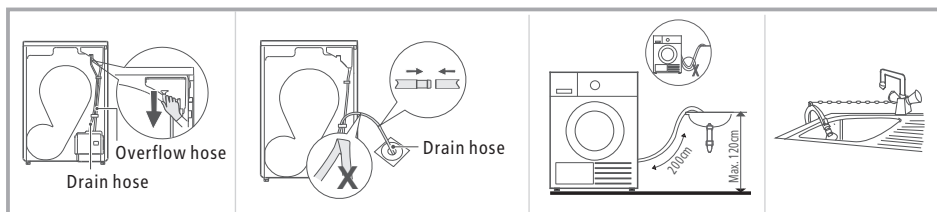
Accessories

The following parts are optional for specific models.

If your dryer has following parts, please wear gloves to install them as per the instruction below .



■ Installation



Pull out the upper drain hose

Put the external drain hose into the floor drain (be careful not to bend the external drain hose)

Put the hose holder in the washing basin or any other sink.

INSTALLATION

Transport

Move cautiously. Do not grasp any salient parts of machine. The machine door cannot be used as the handle for transport. If the dryer can't be transported erectly, the dryer can be tilted to right less than 30°.

Risk of injury and damage!

Improper handling of the appliance may result in injury.

- The appliance is very heavy. Never transport or carry the appliance alone; always with the assistance of another person.
- Remove all obstacles on the transport route and from the installation location, e.g. open doors and clear away objects lying on the floor.
- Do not use the open door as a handhold.
- Remove all package material before using the appliance.
- Before setting up the tumble dryer, check it for any externally visible damage. Do not install or use a damaged tumble dryer.
- Do not install the tumble dryer in a room where there is a risk of frost occurring. At temperatures around freezing point the tumble dryer may not be able to operate properly. There is a risk of damage if the condensed water is allowed to freeze in the pump and hoses.

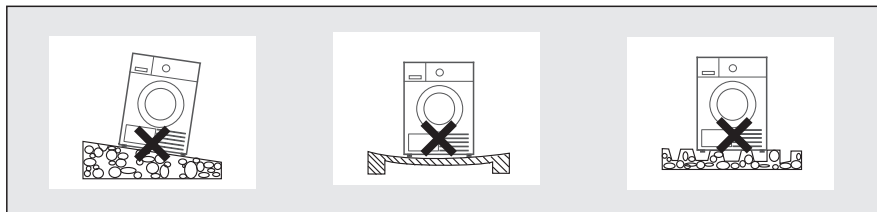
Installation Position

Warning!

- Children can become entangled in the packaging film or swallow small parts and suffocate. Do not allow children to play with the packaging.
 - The appliance must not be installed behind a lockable door, a sliding door or a door with a hinge on the opposite side to that of the tumble dryer, in such a way that a full opening of the tumble dryer door is restricted.
 - Do not restrict the floor clearance through deep pile carpets, strips of wood or similar. This might cause heat built-up which would interfere with the operation of the appliance.
1. It is recommended that, for your convenience, the machine is positioned close to your washing machine.
 2. Do not stack this dryer on washing machine without stacking kits. (If you want to stack this dryer on a washing machine, please purchase the independent parts. Installation shall be done by the manufacturer, its service agent or similarly qualified persons to avoid any hazards.)
 3. The tumble dryer must be installed in a clean place, where dirt does not accumulate. Air must be able to circulate freely around the appliance. Do not obstruct the front air inlet or the air intake grilles at the back of the machine.

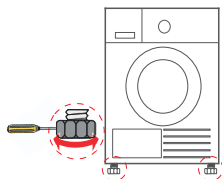
INSTALLATION

4. To keep vibration and noise within minimum level when the dryer is in use, it must be placed on a firm and level surface.
5. The feet must never be removed.
6. Place the product with its back surface to the wall (for heater models).



Level Adjusting

Once in its permanent operating position, check that the dryer is absolutely level with the aid of a spirit level. If it is not, adjust the feet by hand or using a tool.



Power Supply Connection

1. Make sure that the voltage of the power supply is the same as the electric specification.
2. Do not connect the dryer with the power connection board, a universal plug or socket, do not use multi-plug adapters and extension cables.

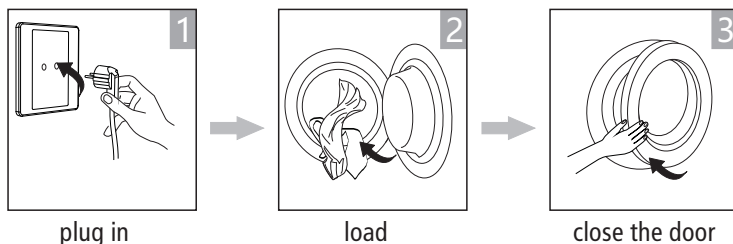
OPERATION

■ Quick Start

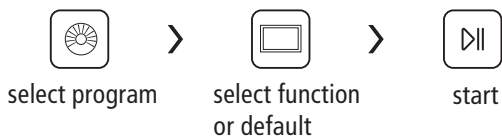
Note!

Before using, make sure the tumble dryer is installed correctly.

Before Drying

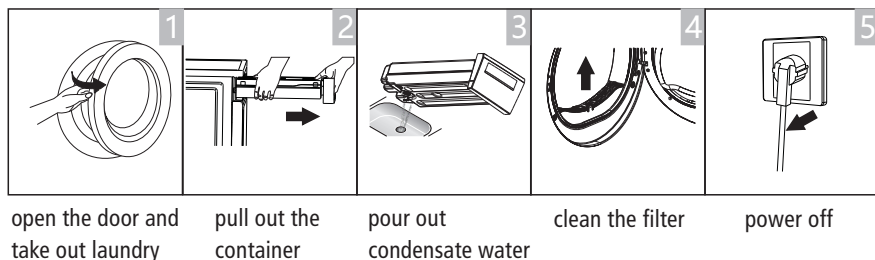


Drying



After Drying

Buzzer beep and "End" on display.



Note!

- If the socket with a switch is used, please press the switch to turn off the power directly.

OPERATION

■ Before Each Drying












Note!

- Leave it to stand for 2 hours after transporting. Before first use, please use the soft fabric to clean the inside drum.
 1. Put some clean rags into the drum.
 2. Plug the power, rotate the knob button.
 3. Select the 【AIRFRESH】 Programme, press 【▶||】 button.
 4. After finishing this programme, please follow the “cleaning and care ” (refer to page 22) to clean the door filter.
- During drying, the compressor and the water will generate some noise which is entirely normal.

1. Before drying, thoroughly spin the laundry in washing machine. High spin speed shortens the drying time and saves energy.
2. For uniform drying result, sort the laundry according to fabric type and select the appropriate drying programme.
3. Before drying, please close zips, hooks and eyelets, button, tie fabric belts, etc.
4. Remove all objects from pockets such as lighters and matches.
5. Sew in or remove underwiring from bras.
6. Close duvet covers and pillow cases to prevent small items from being rolled up inside them.
7. Leave jackets open and undo any long zips so that textiles dry evenly.
8. Do not over dry the clothes, because over dried clothes can easily get creases.
9. Do not dry the articles containing rubber or similar elastic materials.
10. Keep the area around the tumble dryer clean. Coal dust or flour may cause an explosion.
11. The door shall be opened only after the programme of the tumble dryer is finished to avoid being scalded by hot steam or over heated drying machine.
12. Clean the lint filter and empty water container after each use to avoid extension of drying time and increase of energy consumption.
13. Do not dry clothes after dry-clean process.

OPERATION

The reference weight of dry clothes (weight per item)

 Sweater (mixed 800g)	 Jacket (cotton 800g)	 Jeans (800g)	 Bath Towel (cotton 900g)
 Single bedsheet (cotton 600g)	 Work clothes (1120g)	 Pyjamas (200g)	 Shirt (cotton 300g)
 T-Shirt (cotton 180g)	 Underwear (cotton 70g)	 Socks (mixed-weave 50g)	

Note!

- Do not put more load than rated.
- Do not dry dripping wet laundry. The dryer might get damaged

Only dry laundry suitable for tumble drying. Regard the laundry care labels:



Suitable for tumble drying



Normal drying process: Drying in the tumbler is possible under normal load and temperature 80°C.



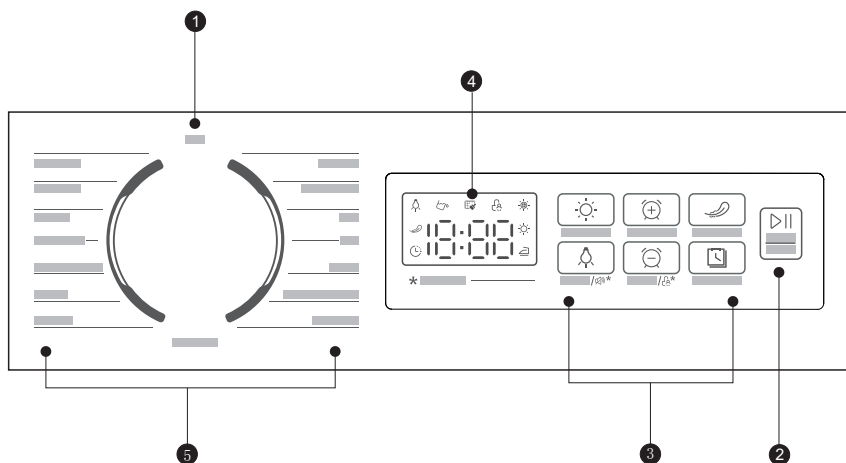
Mild drying process: Caution is appropriate when tumble drying. Select mild process with reduced thermal action.



Do not tumble dry: Articles unsuitable for drying in the tumbler.

OPERATION

■ Control Panel



1 Off

Product is switched off.

2 Start/Pause

Press the button to start or pause the drying cycle.

3 Option

These buttons are used for setting additional functions.

4 Display

The display shows the setting, estimated program time remaining and status messages of your dryer.

5 Programmes

Different drying cycles can be selected according to the users need and the type of laundry to be dried.

OPERATION

■ Option



DELAY END

This function is used for delaying the end of the drying programme up to 24 hours. When the delayed programme starts, the time starts to countdown on the display and the delay icon illuminate.

1. Load your laundry and make sure the machine door is closed.
2. Rotate the knob button, then use the programme selector knob to select the desired programme.
3. Press the **【DELAY END】** button.
4. Repeatedly to press the **【DELAY END】** button to select the desired delay time.
5. After the **【▷||】** button is pressed, the Dryer is at the running condition.
The drying procedure will be automatically performed when the delay time is over.
6. If you press the **【▷||】** button again, the delay function will be paused.
7. If you want to cancel the "DELAY END" function, please rotate the knob button to off.



TIME+/TIME-

When the **【AIRFRESH】** or **【TIME DRY】** programme is selected, the **【TIME+】**, **【TIME-】** button can be used to adjust the drying time in 10 min. steps.



DRY LEVEL

You can adjust the dryness level of the laundry by pressing the **【DRY LEVEL】** button. There are three grades, please refer to icons table on page 18.

1. The dry level function can be activated only before the programme starts.
2. Press the **【DRY LEVEL】** button repeatedly to increase the drying grade.
3. Except the **【ECO】**, **【AIRFRESH】**, **【QUICK 35'】**, **【TIME DRY】**, **【WOOL REFRESH】**, and **【HEALTH GUARD】**, all the other programmes can be adjusted with the **【DRY LEVEL】** function.



Signal

Press the **【Lamp】** button for 3 seconds to activate signal. Set the buzzer on or off. In default condition, the buzzer is on.

When the buzzer is on:

1. The dryer will affirm pressed function button by a sound.
2. If the programme knob is rotated during the dryer is running, the buzzer will remind the user that this is an invalid operation.
3. When the drying programme is done, the buzzer will beep.

OPERATION



ANTI-CREASE

At the end of the drying cycle, a 30 minutes anti-crease function is active as default setting. The time for the function can be adjusted to 30-60-90-120minutes.

This function prevents the laundry from creases.

The laundry can be removed during the anti-crease phase.

Except **【WOOL REFRESH】**, all the other programmes have this function.



LAMP

The drum light will be on for 1 minute when the button is pressed or 1 minute when the door is open.








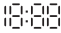


CHILD LOCK

1. This machine incorporates a special child safety lock, which can prevent children from carelessly pressing buttons or making the faulty operation.
 2. When the dryer is running, pausing or stand by, press the **【TIME-】** button for 3 seconds to activate child lock.
 3. When child lock function is set, the display will show Child lock icon and all button are deactivated, except when the **【TIME-】** button is pressed for 3 seconds.
 4. To deactivate the child lock function, the **【TIME-】** button shall be pressed for 3 seconds.
-

OPERATION

■ Display

	Delay End
	Anti-crease
	Lamp
	Empty water container (warning)
	Clean filters (warning)
	Child lock
	Dry level (extra dry, cupboard dry, iron dry)
	Remaining Time indicator/Error message

OPERATION

■ Programmes

Programme selector

1. When the LED display screen brightens up, rotate the programme knob to select the desired programme.
2. Select the **【DELAY END】**, **【TIME+】**, **【TIME-】**, **【DRY LEVEL】**, **【ANTI-CREASE】**, **【LAMP】** functions for additional options.
3. Press the **【▷||】** button.
4. Rotate the knob to the **【OFF】** after the programme has completed.

Programme start

The drum will rotate after the programme starts. The remaining programme time will be displayed.

Programme end

1. The drum will stop rotating after the programme ends. The display will show "End".
The dryer will start Anti-crease function if user doesn't remove the load.
Please Rotate the knob to the **【OFF】** after unloading the tumble dryer to cut off power and pull out the plug.
2. Deal with the problems according to "Trouble Shooting" section, if there is an unexpected stop during the drying procedure or the dryer shows an Error Code (Refer to page 25).

OPERATION

■ Drying Programmes Table

Programme	Max Load	Application/Properties	DELAY END	TIME
COTTON	8.0kg	For single or multi-layer cotton laundry to be dried completely for direct storage.	Y	N
SYNTHETICS	3.5kg	To dry thin synthetic textiles, which are not ironed, such as easy care shirts, baby cloths or socks.	Y	N
ECO	8.0kg	For single or multi-layer cotton laundry to be dried completely for direct wear.	Y	N
MIX	3.5kg	For mixed fabrics from cotton and synthetics.	Y	N
JEANS	4.0kg	To dry jeans or leisure clothes that are spun at high speed in the washing machine.	Y	N
WOOL REFRESH	1.0kg	For wool clothes that have been stored and need to be refreshed, reheat them again.	Y	N
AIRFRESH	–	For clothes that have been stored and need to be refreshed, and the timing can be adjusted between 10 to 30 minutes.	Y	Y
TIME DRY	–	To dry individual items or complete the drying multi-layer fabrics with different drying behavior, such as jackets, pillows or voluminous items. Min 10 min. to max. 150min.(in 10 min. steps)	Y	Y
SPORTS	3.0kg	To dry sportswear and thin fabrics from polyester, which are not ironed.	Y	N
SHIRTS	1.0kg	Place clothes loosely in the dryer. Once dried, remove quickly and hang it on a clothes hanger. Easy care laundry (small amount of thin synthetics), such as shirts and blouses equipped with anti-crease functionality to minimize the ironing effort. It is recommended to put shirts of the same material when selecting the shirts program.	Y	N
HEALTH GUARD	4.0kg	Sterilize and dry heat-resistant clothing.	Y	N
BED LINEN	4.0kg	To dry bed linen, bed sheets or other large items.	Y	N
TOWEL	3.0kg	For thick or multi-layer synthetic fabrics to be dried completely.	Y	N
DELICATE	1.0kg	Suitable for fine small items made of underwear and silk materials	Y	N
QUICK 35'	0.5kg	Suitable for synthetics textile like light sportswear set, single pieces of light cotton wear or small quantity mix of synthetics with light cotton. Do not overload maximum capacity of this programme. For textiles like towels, bathrobes or bathroom rugs please use Towel programme.	Y	N

• Note for Test Institutes:

1. ECO programme is used to assess the compliance with EU Regulation 2023/2533 and 2023/2534 for eco design and energy labelling, measured in accordance with EN 61121.
2. ECO programme is suitable for drying normal wet cotton laundry and it is the most efficient programme in terms of energy consumption for cotton.

OPERATION

■ Consumption Data ①

Model	Program	Capacity	Final moisture content	Drying Time [h:min]	Energy Consumption	Spin Speed
MD110H80/W-CY	ECO	8.0kg	0%	3:30	2.10kWh	1000rpm
		4.0kg	0%	2:20	1.20kWh	1000rpm
	COTTON	8.0kg	0%	3:30	2.10kWh	1000rpm
		4.0kg	0%	2:20	1.20kWh	1000rpm
	COTTON EXTRA (COTTON+☼)	8.0kg	-3%	4:10	2.60kWh	1000rpm
		4.0kg	-3%	2:50	1.60kWh	1000rpm
	COTTON IRON (COTTON+☹)	8.0kg	12%	3:00	1.80kWh	1000rpm
		4.0kg	12%	1:50	0.95kWh	1000rpm
	SYNTHETICS IRON (SYNTHETICS+☹)	3.5kg	12%	1:20	0.75kWh	800rpm
	SYNTHETICS EXTRA (SYNTHETICS+☼)	3.5kg	0%	1:40	0.95kWh	800rpm
	SYNTHETICS	3.5kg	2%	1:30	0.85kWh	800rpm
	WOOL REFRESH	1.0kg	/	0:25	0.30kWh	/
	DELICATE	1.0kg	0%	1:25	0.75kWh	800rpm

* Acoustic airborne noise emission of the ECO programme at full load is 66dB.

Note!

- Thick or multi-layered fabrics, e.g. jackets etc., are not easy to dry. You had better choose Cotton programme.
- Please follow instructions at page 16 to change dryness level.
- As uneven material, thick and multi-layered clothes are not easy to dry, it is better to choose the appropriate time drying programme to completely dry them if some parts of the clothes are still damp after programme finishes.
- Loading the household tumble dryer up to the maximum capacity for the respective programmes will contribute to energy savings.

① All data are measured in accordance with EN 6121.

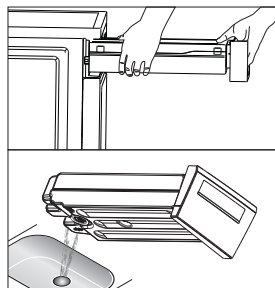
The actual consumption may differ from the values given in the table,
The values given for programmes other than the eco programme are indicative only;
depending on the amount of the laundry, type of fabric, residual moisture and
any additional functions selected.

MAINTENANCE

■ Cleaning and Care

Empty the water container

1. Pull out and hold the water container with two hands.
2. Tilt the water container, pour out the condensate water into the basin.
3. Install the water container.



⚠ Warning!

- Empty the water container after each use. Once the water container is filled completely, the programme will be paused and the "👉" will light up and flash on the display. After the container is emptied, the dryer can be restarted by pressing 【▶/||】 button.
- Do not drink the condensate water.
- Do not use the dryer without the water container.

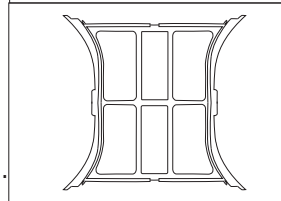
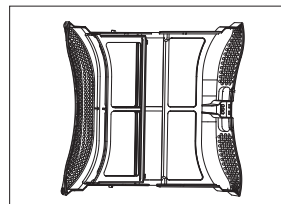
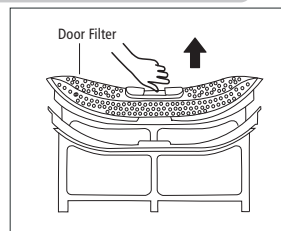
Clean the filters

This dryer has a primary door lint filter.

Make sure you clean the door filter after each cycle to avoid increased energy consumption and cycle time.

📌 Note!

- To ensure the double-layer filter can be closed smoothly, the arrows at both ends need to be aligned, and the middle slot and the rib need to be aligned.



Clean the door filter

1. Open the door.
2. Take out the door filter.
3. Open the filter and remove the fluff on the filter screen.
You can use a vacuum cleaner to remove the lint or clean it by hand.
4. Throw lint in the garbage bin and do not wash it down the drain to avoid micro plastics in the used water system.

📌 Note!

- Take notice of the correct orientation before to insert the door filter.

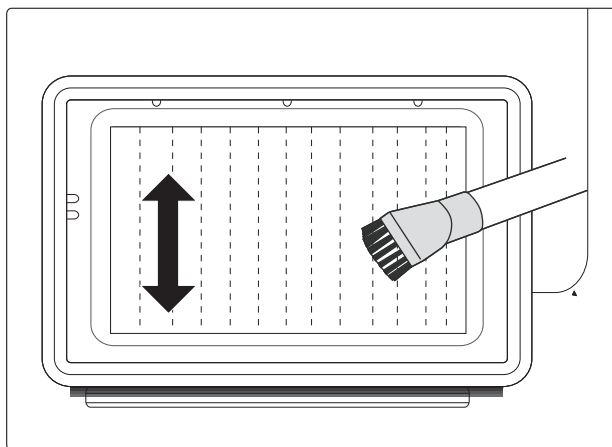
MAINTENANCE

Clean the heat exchanger

⚠ Warning!

Do not touch the heat exchanger with your hand, which may cause an injury.

- As necessary, approx. once every 3 months, remove the fluff from the heat exchanger using a vacuum cleaner with a dusting brush attached.
- Clean the heat exchanger without applying any pressure. Otherwise the heat exchanger could be damaged. The dryer will not dry if the cooling fins are damaged or bent.



Foreign objects removal

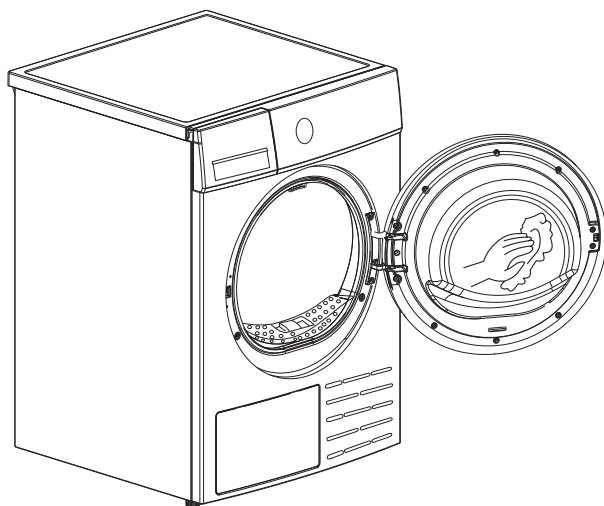
- In case of foreign objects fall inside below the filter compartment, remove the filter, open the heat exchanger area compartment and remove the foreign object making sure not to touch the heat exchanger with bare hands to avoid injuries.

MAINTENANCE

Clean Tumble dryer

⚠ Warning!

- Disconnect the power cord before cleaning!
- Clean the dryer with a wet cloth which is only damped by clean water.
- Do not use solvents, abrasive cleaners, glass cleaners or all-purpose cleaners. These could damage plastic surfaces and other parts.
- Please wear gloves when cleaning.




After each use:

- Prepare a wet cloth damped by clean water.
- Clean the door, especially the inside window.
- Clean the sealing around the door opening.
- Clean the humidity sensor inside the drum.
- Take out all the filters, clean the sealing and air flow openings.
- Before starting the dryer, dry all parts with a soft cloth.

MAINTENANCE

■ Trouble Shooting

Many malfunctions and faults that might occur in daily operation can be easily remedied. Time and money will be saved because a service call won't be needed. The following guide may help you to find the reason for a malfunction and correct it.

Display	Reason	Solutions
	Container is full	Empty water container
	Water pump failure or water level sensor failure	Please contact your local service center if the problem occurs.
"E33"	Temperature sensor error	
"E82"	PCB communication error	

WARNING!

- Self-repair or non-professional repair may create safety risk and cease the guarantee.
- If the LED displays other prompt and the dryer does not work, pull out the plug from the socket, please call the service.

Note!

Spare parts are available for a minimum time of 10 years after placing the last unit of present model on the market.

MAINTENANCE

Problem	Solution
• Display is not on	<ul style="list-style-type: none"> • Check if the power supply works. • Check if the mains plug is inserted. • Check the selected programme . • Rotate the knob to the 【OFF】 .
• "💧" is lighting	<ul style="list-style-type: none"> • Check the water container. If it's full, please pour out the condensate water and restart the dryer. • If the container is not full, please restart the dryer directly. • If the "💧" icon is still lighting after you have finished the first two steps, please call the service. • When the dryer is powered on standby, the "💧" icon will always on to remind the user to pour out the condensate water. After startup, the "💧" icon will disappear.
• "🌀" is lighting	<ul style="list-style-type: none"> • Clean the lint filter. • When the dryer is powered on standby, the "🌀" icon will flash for 10 seconds to remind the user to clean the filter. After 10 seconds, the "🌀" icon will always on. After startup, the "🌀" icon will disappear.
• Dryer does not start	<ul style="list-style-type: none"> • Connect the tumble dryer to the mains. • Turn on the tumble dryer. • Check the the door is closed. • Check the programme is set. • Press the 【▶▶】 button.
• Degree of dryness was not reached or drying time too long	<ul style="list-style-type: none"> • Clean lint filter and heat exchanger. • Empty the water container. • Check the drain hose. • Check installation place is appropriate. • Keep the air inlet clean. • Use higher drying intensity level programme or time programme.
• There are humming noises	<ul style="list-style-type: none"> • The compressor is operating. These noises are quite normal and do not indicate a fault.
• The dryer switches off at the end of the programme	<ul style="list-style-type: none"> • The dryer switches off automatically for energy saving. This is not an error but a normal function.

Warning!

If you cannot deal with the problems by yourself and need help:

- Rotate the knob to the **【OFF】** .
- Pull out the mains plug and call the service.

MAINTENANCE

■ Technical Specifications

Model	MD110H80/W-CY
Parameter	
Dimension(L*W*H)	600*595*850(mm)
Ambient temperature	+2°C ~ +35°C
Rated input power	800W
Rated voltage	220-240V~
Rated frequency	50Hz
Refrigerant	R290
Weight of product	42kg
Rated capacity	8.0kg
GWP	3
CO ₂ - eq	0.00t
Quantity of refrigerant	105g

Note!

- The rated capacity is the maximum capacity to be dried at one time. Make sure that the dry clothes which are loaded into the appliance do not exceed the rated capacity.
- Do not install the tumble dryer in a room when there is a risk of frost occurring. At temperatures around freezing point the tumble dryer may not be able to operate properly.
- There is a risk of damage if the condensate water is allowed to freeze in the pump, hoses and / or condensate water container.

Note!

How to find Energy related information on the public database of European Commission EPREL:

1. Open the EPREL database homepage
<https://eprel.ec.europa.eu/screen/product/tumbledriers>
2. Search for the model
Model ID: MD110H80/W-CY

MAINTENANCE

■ Product Information Sheet

Model	MD110H80/W-CY
Rated Capacity	8.0kg
Dryer Type	Condenser
Energy Efficiency Class	E
Automatic or non-automatic	Automatic
Energy consumption of the ECO programme	
Weighted energy consumption of the ECO programme at full and partial load (E _{tc})	1.42kWh
Standard energy consumption of the ECO programme (SE _c)	1.70kWh
Energy consumption of the ECO programme at full load (E _{dry})	2.10kWh
Energy consumption of the ECO programme at partial load (E _{dry,1/2})	1.20kWh
Energy Efficiency Index (EEI)	83.5
Programme time of the ECO programme	
Weighted programme duration for the ECO programme (T _t)	157min
Programme duration for the ECO programme at full load (T _{dry})	210min
Programme duration for the ECO programme at partial load (T _{dry,1/2})	140min
Condensation efficiency class A (most efficient) to D (least efficient)	D
Average condensation efficiency of the ECO programme at full load (C _{dry})	80%
Average condensation efficiency of the ECO programme at partial load (C _{dry,1/2})	80%
Weighted condensation efficiency for the ECO programme at full and partial load	80%
Acoustic airborne noise emission during the ECO programme	66dB
Power consumption in off mode (P _o)	0.50W
Power consumption in delay start (P _{ds})	4.00W
Does 'standby mode' include the display of information?	No
Power consumption in standby mode (P _{sm})	N/A
Power consumption in 'standby mode' in condition of networked standby (P _{nsm})	N/A

Remarks:

Measured according to EN 61121 and EU Regulation 2023/2533, 2023/2534. Energy efficiency class on a scale from A (more efficient) to G (least efficient).



make yourself at home